

e9



Engagement Methods, Guiding Commitments, and Livability Framework

RETHINKING I-94: ENGAGING COMMUNITIES

June 2018

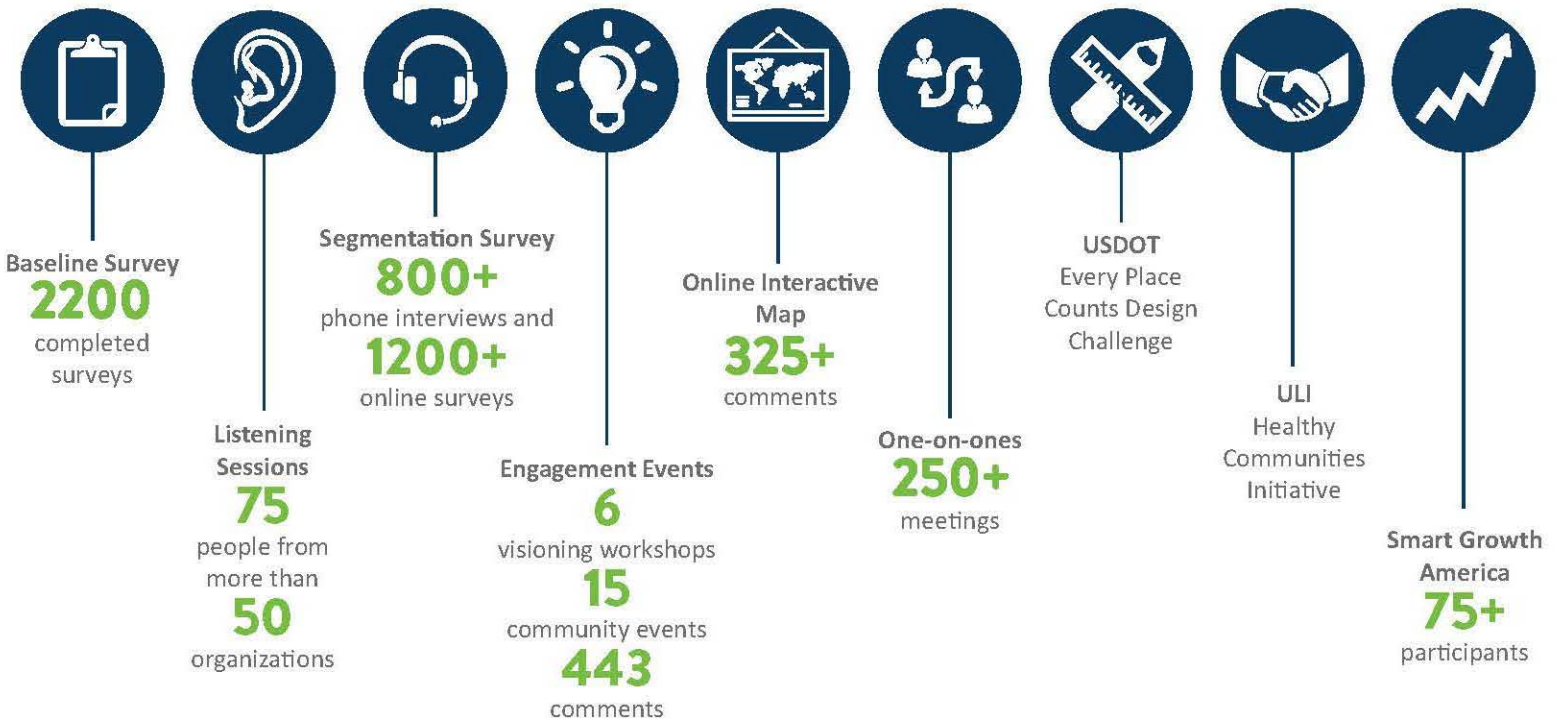
Since 2016, the **Minnesota Department of Transportation** has been engaging with communities along Interstate 94 between St. Paul and Minneapolis in an effort to *plan for future transportation* changes on and along the freeway. We spent our time *listening* and *learning* directly from the people about:

- How they want to be engaged
- Past frustrations and hopes for the future as it relates to I-94
- Visions for the I-94 corridor and their communities

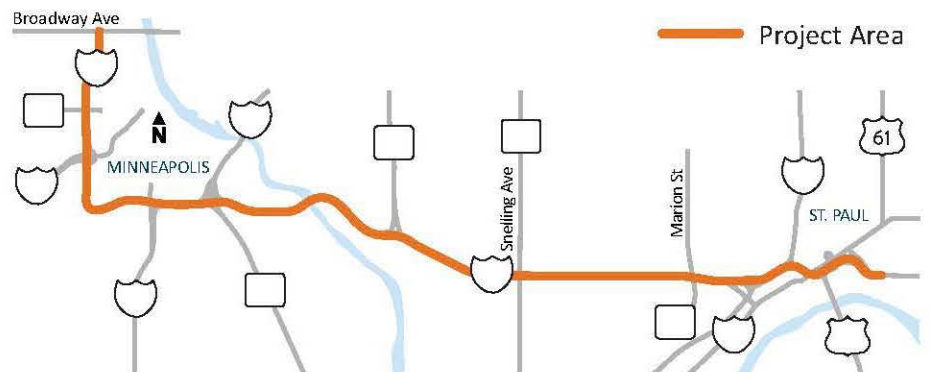
Based on what we have heard, *our vision for the I-94 corridor* is to best address all transportation infrastructure and modal needs while balancing community needs and impacts. Any *improvement and enhancement* to the I-94 corridor will be sensitive to the health, environment, safety, accessibility, connectivity, economic vitality, legacy and equity of the adjacent I-94 corridor neighborhoods, communities and stakeholders.

Engagement methods

We used several approaches to engage with communities along the I-94 corridor.



Rethinking I-94: Project Corridor



What we learned

People want to be involved early and continuously; want to be respected and provided with accurate, timely information; want engagement to be inclusive and robust; want community values and visions to be reflected in designs.

GUIDING COMMITMENTS FOR PROJECT TEAMS

We developed the following guiding commitments based on what people expect from MnDOT. These commitments will guide how we work with communities in the future.

COMMITMENT



Understanding a community's underlying values and issues of importance, now and into the future, to articulate common ground; building toward that vision with each project and demonstrating that commitment to communities over time



Cultivating joint ownership of each stage of the process; acknowledging that local knowledge is valid and valuable expertise; including communities in identifying criteria for prioritizing decisions and being partners in problem solving



Providing timely, accessible information as well as multiple options for participation; acknowledging issues and constraints communicated by stakeholders



Communicating realistic timelines, participation impact, funding realities, decision-making processes and levels of authority; making visible the context of the whole process at each step



Creating inclusive partnerships and teams from vision to construction; ensuring multiple voices are engaged and reflected in decision making

LIVABILITY FRAMEWORK FOR COMMUNITIES

We developed the following livability framework based on what people expect from the project work. This framework will guide how we design and evaluate projects in the future.



Quality of life, comfortable environment, well-being, sustainability, green space, land use, health, communication, tangible benefits



Jobs, business vitality/opportunities and development, wealth generation, revenue generation, affordability over time



Legacy, vibrancy, sense of identity, cultural pride, our future



Personal security, freedom from danger, risk or harm



Infrastructure aligning with meaningful physical, social and cultural community connections



Inclusive of all people - all races, ethnicities, incomes and abilities - with extra effort to ensure that historically under-represented populations are included and past inequities are addressed to the extent possible



Familiarity, cohesion, stakeholder involvement, good faith collaborations, collaborative work with an interdisciplinary and multijurisdictional team, resilient relationships



FOR MORE INFORMATION

Contact project staff

Brenda Thomas

Brenda.thomas@state.mn.us
651-234-7858

Nick Carpenter

Nick.carpenter@state.mn.us
651-234-7860

Visit the project website

mndot.gov/I-94minneapolis-stpaul